

# MONTHLY MEMBERSHIP PROGRESS REPORT

LOCATION WISCONSIN

District 27 B1

Results as of: 1/31/2023

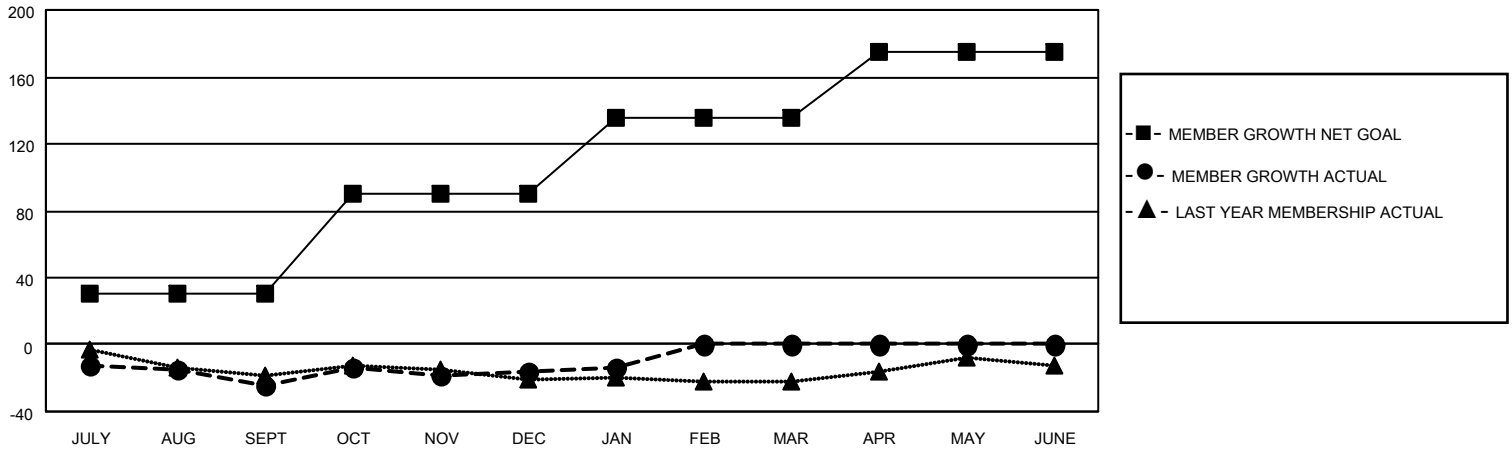
| Clubs                 |               |           |               |
|-----------------------|---------------|-----------|---------------|
| RESULTS FOR 2022-2023 |               |           |               |
| QUARTER               | NEW CLUB GOAL | NEW CLUBS | DROPPED CLUBS |
| JULY/AUG/SEPT         | 0             | 0         | 0             |
| OCT/NOV/DEC           | 1             | 0         | 0             |
| JAN/FEB/MAR           | 0             | 0         | 0             |
| APR/MAY/JUNE          | 1             | 0         | 0             |

| Members               |                        |                      |  |
|-----------------------|------------------------|----------------------|--|
| RESULTS FOR 2022-2023 |                        |                      |  |
| QUARTER               | MEMBER GROWTH NET GOAL | MEMBER GROWTH ACTUAL | DROPPED MEMBERS ACTUAL (including transfers) |
| JULY/AUG/SEPT         | 30                     | 28                   | 49   |
| OCT/NOV/DEC           | 60                     | 38                   | 29   |
| JAN/FEB/MAR           | 45                     | 15                   | 13   |
| APR/MAY/JUNE          | 40                     | 0                    | 0  |

**GOALS AND ACTUAL NEW CLUBS CUMULATIVE**



**GOALS AND ACTUAL MEMBERS CUMULATIVE**



**DROPPED CLUBS: 0**

**31 CLUBS OF 63 ADDED 1 OR MORE NEW MEMBERS**

**GENDER DISTRIBUTION**

|                      |                |
|----------------------|----------------|
| MALE                 | 1,336 (72.85%) |
| FEMALE               | 498 (27.15%)   |
| NON BINARY           | 0 (0.00%)      |
| PREFER NOT TO ANSWER | 0 (0.00%)      |

**DROPPED MEMBERS**

[CLICK HERE FOR CUMULATIVE MEMBERSHIP DATA](#)

|                |           |
|----------------|-----------|
| DECEASED       | 17        |
| CLUB CANCELLED | 0         |
| OTHER          | 74        |
| <b>TOTAL</b>   | <b>91</b> |

|                                 |     |
|---------------------------------|-----|
| TOTAL FAMILY UNIT MEMBERS       | 350 |
| FAMILY MEMBERS PAYING HALF DUES | 177 |